

## 1. System requirements

Component	Requirement
Supported Operating Systems	Windows 7 32 & 64-bit, Windows Vista 32 & 64-bit, Windows XP 32 & 64-bit
Processor	400 MHz Pentium processor or equivalent (minimum), 1 GHz Pentium processor or equivalent (recommended)
RAM	512 MB (minimum); 1 G (recommended)
Hard Disk	Up to 500 MB of available space may be required
CD or DVD Drive	Not required
Display	1024 x 768 high color, 32-bit

## 2. Connectivity

The network that the user is logged into should allow the following connections through its firewall:

Addresses_GLOBAL	IP	Port
fluids.hxsizing.com	71.40.101.15	80
comm.hxsizing.com	71.40.101.11	80

And if install base is United States server:

Address_US specific	IP	Port
install.hxsizing.com	71.40.101.11	80
uservalidation.hxsizing.com	71.40.101.11	80
websync.hxsizing.com	71.40.101.11	80

And if install base is European server:

Address_EU specific	IP	Port
install-se.hxsizing.com	194.237.7.59	80
uservalidation-se.hxsizing.com	194.237.7.59	80
sync-se.hxsizing.com	194.237.7.59	80

And if install base is Indian server:

Address_IN specific	IP	Port
install-acn.hxsizing.com	121.241.185.6	80
uservalidation-acn.hxsizing.com	121.241.185.6	80
sync-acn.hxsizing.com	121.241.185.6	80

## 3. Programs / Services

Conductor III will run the following executables:

[HxUpdateServiceIII.exe](#)

[HxSizing.exe](#)

[HxStart.exe](#)

[HxInstall.exe](#)

If the user's firewall performs program filtering, please grant internet access privileges to these programs.

## 4. Permissions to local directories

Please verify that the user has "modify" access to the following directories:

WindowsXP:

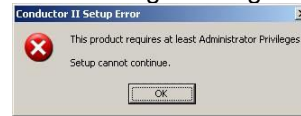
{Root}:\Documents and Settings\{User}\Local Settings\Application Data\Hx\HxSizing\{Installed Version No}

Vista / Win 7:

{Root}:\Users\{User}\AppData\Local\HxSizing\HxSizing\{Installed Version No}

## 5. Authorization

Installer must have local administrative rights, otherwise the following message will show:



## 6. Download & install location

Installation links (always refer to your designated install location):

US: <http://install.hxsizing.com/ConductorIII/MinInstallVersion/CDIIISetup.exe>

EU: <http://install-se.hxsizing.com/ConductorIII/MinInstallVersion/CDIIISetup.exe>

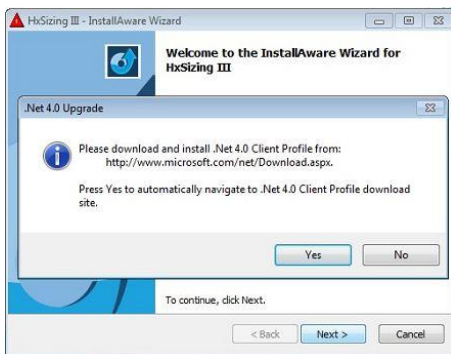
IN: <http://install-acn.hxsizing.com/ConductorIII/MinInstallVersion/CDIIISetup.exe>

CN: <http://install-cn.hxsizing.com/ConductorIII/MinInstallVersion/CDIIISetup.exe>

Start CDIIISetup.exe (this requires Administrative privileges)



Click Next.



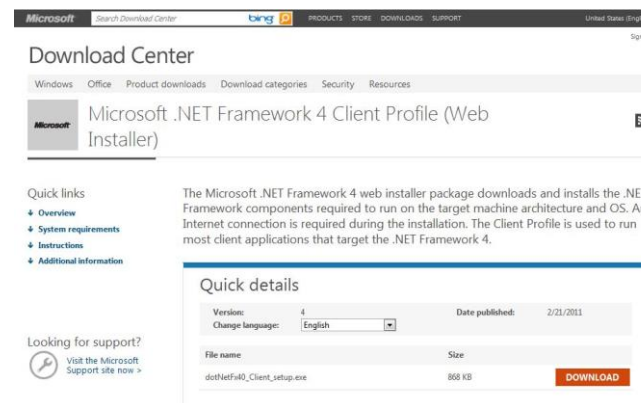
If you already have .Net 4 installed you can skip all the way to Step 7.

To install .Net 4 Framework, which is provided by Microsoft, you can either click yes or go to <http://www.microsoft.com/en-us/download/details.aspx?id=17851>. Once .Net 4 is installed proceed from Step 7.

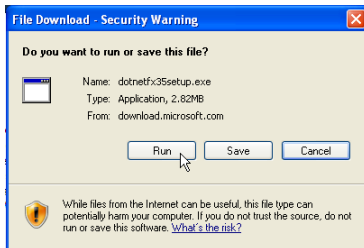
This is the screen you will see if you had to install .Net 4 Framework. Please note this is a Microsoft website.



Click Install .NET Framework 4.



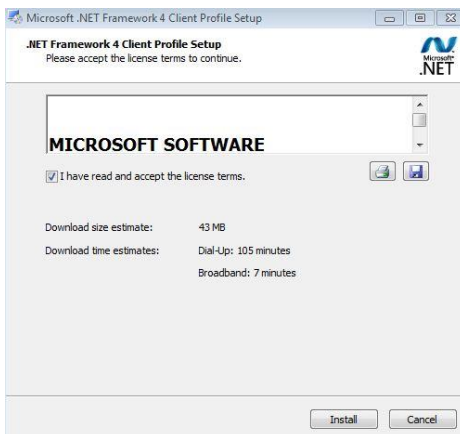
Click Download.



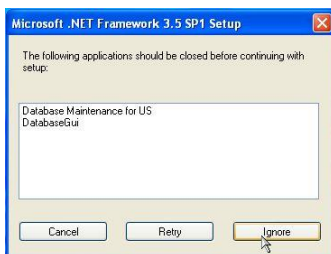
Click Run (yours may look different).



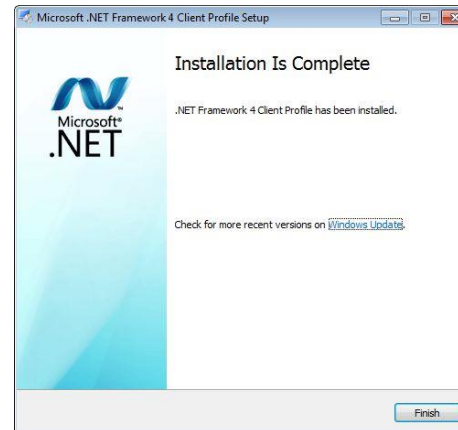
Click Run (yours may look different).



Click Install.



If you get a message during installation that says “The following applications should be closed before continuing with setup: you can safely click “Ignore”, but you will be required to restart your computer once the installation is finished.



Once installation is completed press Exit, then restart CDIIISetup.exe

## 7. Conductor III installation.

Installation links (always refer to your designated install location):

US: <http://install.hxsizing.com/ConductorIII/MinInstallVersion/CDIIISetup.exe>

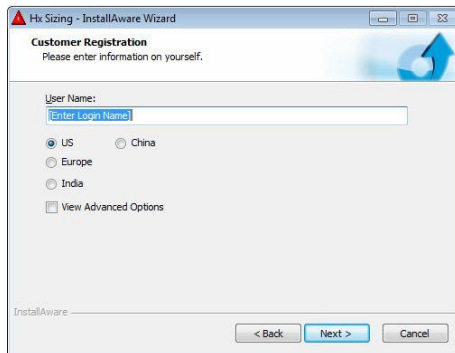
EU: <http://install-se.hxsizing.com/ConductorIII/MinInstallVersion/CDIIISetup.exe>



[Click Run.](#)



[Click Run again.](#)



Enter your Conductor III user name and choose your location.

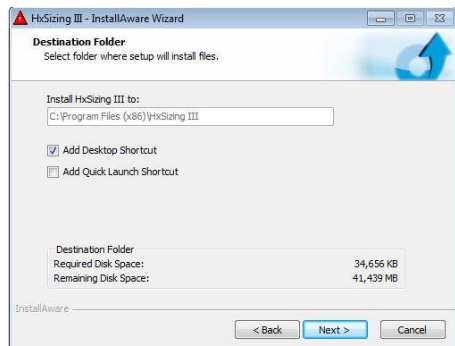
**Use IP Address** if you aren't able to authenticate with the domain name.

**Only change the Proxy setting** if you are having problems with connecting to the server in Conductor III.

**Do not** change this if this is your first time to install.

*(Conductor III cannot be directly configured to use a proxy, it uses settings from IE. When using the setting "Ignore proxy settings" all CDIII does is ignore the settings that are set in IE.)*

Then click "Next >".



Then click "Next >".



Then click "Next >".



Then click "Next >".



And the installation is complete.